

YG-DCO-015-A

# Yorkshire Green Energy Enablement (GREEN) Project

Volume 2

Document 2.8.2 Statutory or Non-Statutory Sites or Features  
of Nature Conservation Plan Section B

Final Issue A

November 2022

Planning Inspectorate Reference: EN020024

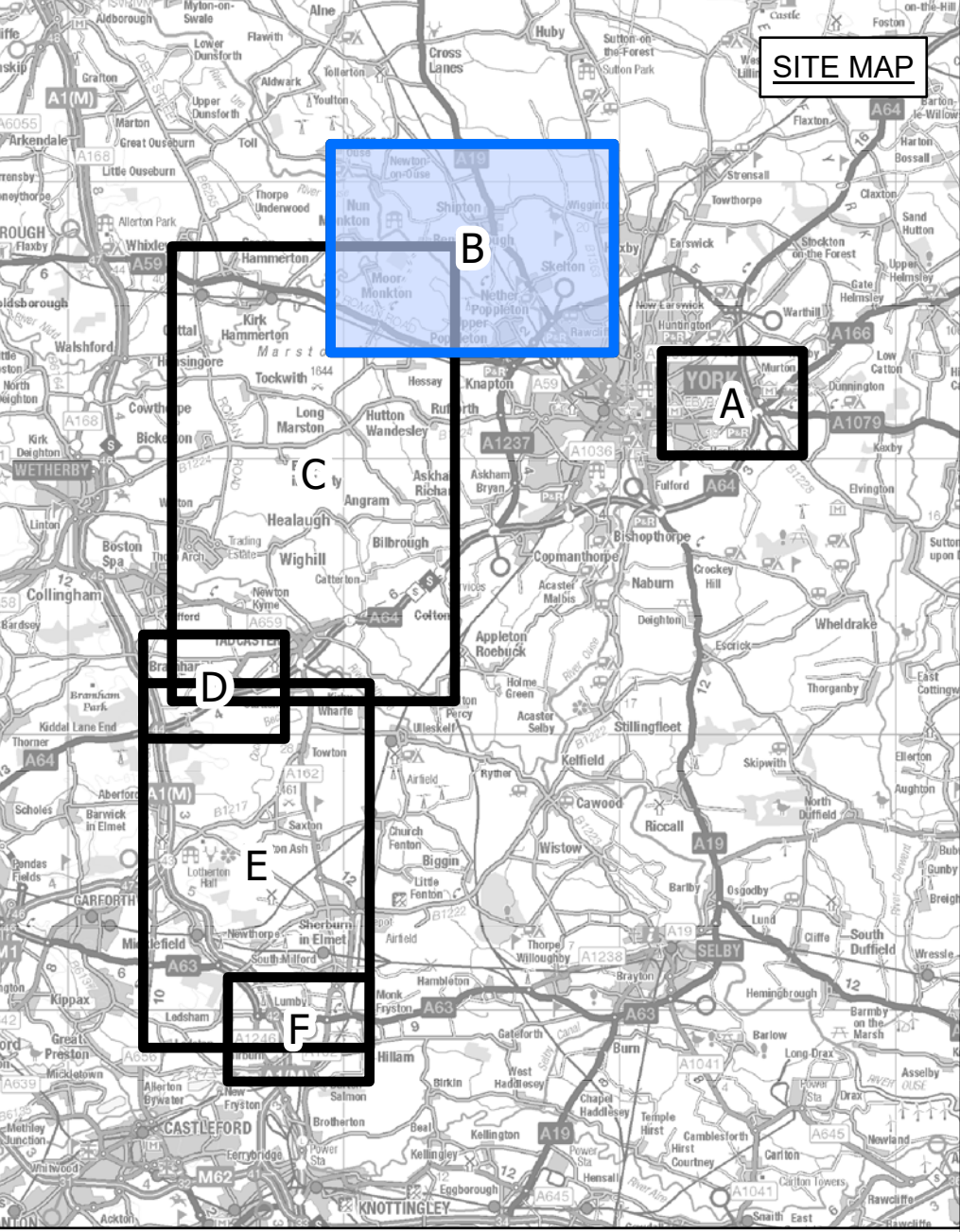
Infrastructure Planning (Applications: Prescribed Forms and  
Procedure) Regulations 2009 Regulation 5(2)(l)(i)

**nationalgrid**





NATIONAL GRID (YORKSHIRE GREEN ENERGY ENABLEMENT PROJECT) ORDER  
 STATUTORY OR NON-STATUTORY SITES OR FEATURES OF NATURE CONSERVATION KEY PLAN  
 REGULATION 5(2)(I)(i)  
 SECTION B, SHEET 1 OF 1



- LEGEND**
- LOCAL AUTHORITY BOUNDARY
  - - - SECTION BOUNDARY
  - ▭ ORDER LIMITS
  - SHEET INDEX

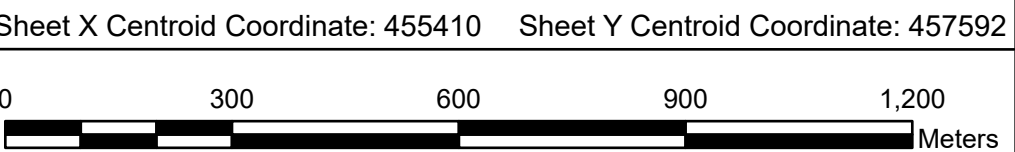
**Notes**

This drawing is scaled at paper size A0, therefore any prints taken at smaller sizes will affect accuracy of the measurement units and should not be scaled against.

For additional detail on the plan suites, please refer to Document 2.3 Plan Guidance Document, located in Volume 2 of the DCO Application.

The local authorities' boundaries and titles are correct at the time of submission. North Yorkshire County Council and its 7 districts are expected to form a new single council (North Yorkshire Council) on 1 April 2023.

Coordinate System: British National Grid  
 Sheet X Centroid Coordinate: 455410 Sheet Y Centroid Coordinate: 457592



BACKGROUND MAPPING INFORMATION HAS BEEN REPRODUCED FROM THE ORDNANCE SURVEY BY PERMISSION OF ORDNANCE SURVEY OF THE CONTROLLER OF HER MAJESTY'S STATIONERY OFFICE. CROWN COPYRIGHT ORDNANCE SURVEY © BLUESKY INTERNATIONAL LTD © NATIONAL GRID ELECTRICITY - 100024241.

| Issue | Date       | Remarks            | Drawn | Checked | Approved |
|-------|------------|--------------------|-------|---------|----------|
| A     | 01/11/2022 | FOR DCO SUBMISSION | MTH   | SF      | EMD      |

Title

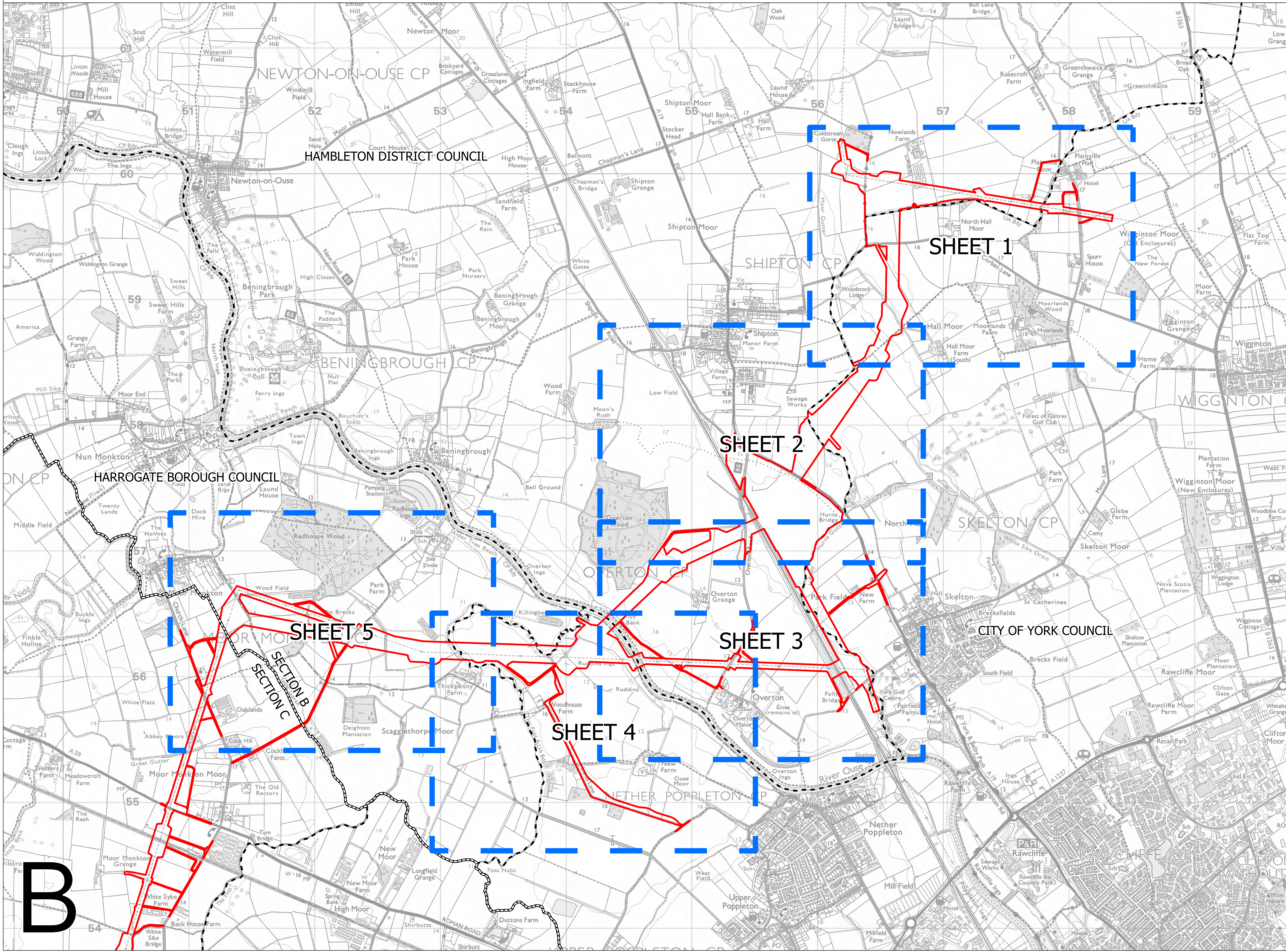
NATIONAL GRID  
 (YORKSHIRE GREEN ENERGY  
 ENABLEMENT PROJECT) ORDER  
 STATUTORY OR NON-STATUTORY SITES  
 OR FEATURES OF NATURE CONSERVATION  
 KEY PLAN  
 REGULATION 5(2)(I)(i)  
 SECTION B, SHEET 1 OF 1

**nationalgrid**

Application Number EN020024

National Grid Drawing Reference DCO\_B/NR/KP/01

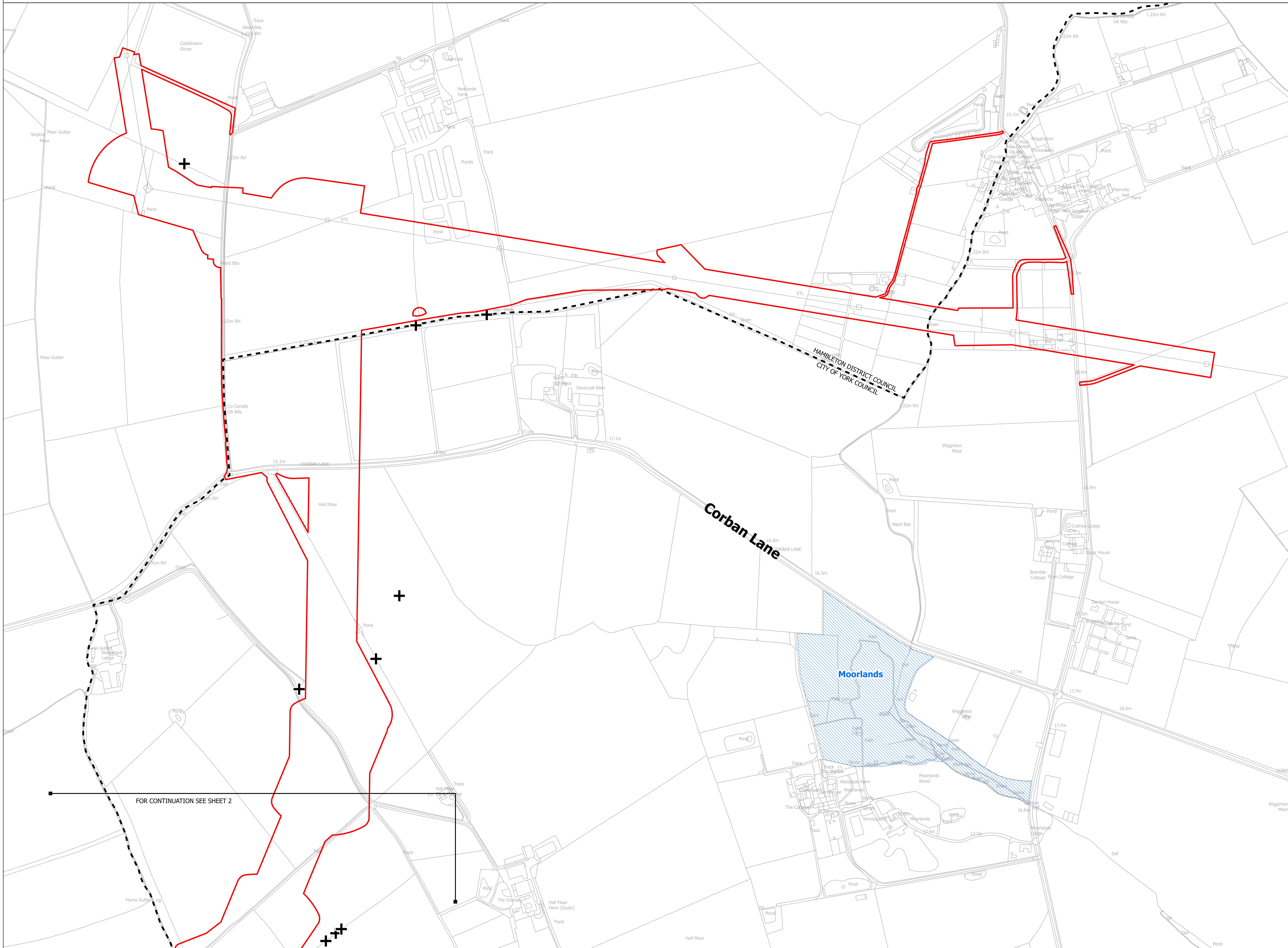
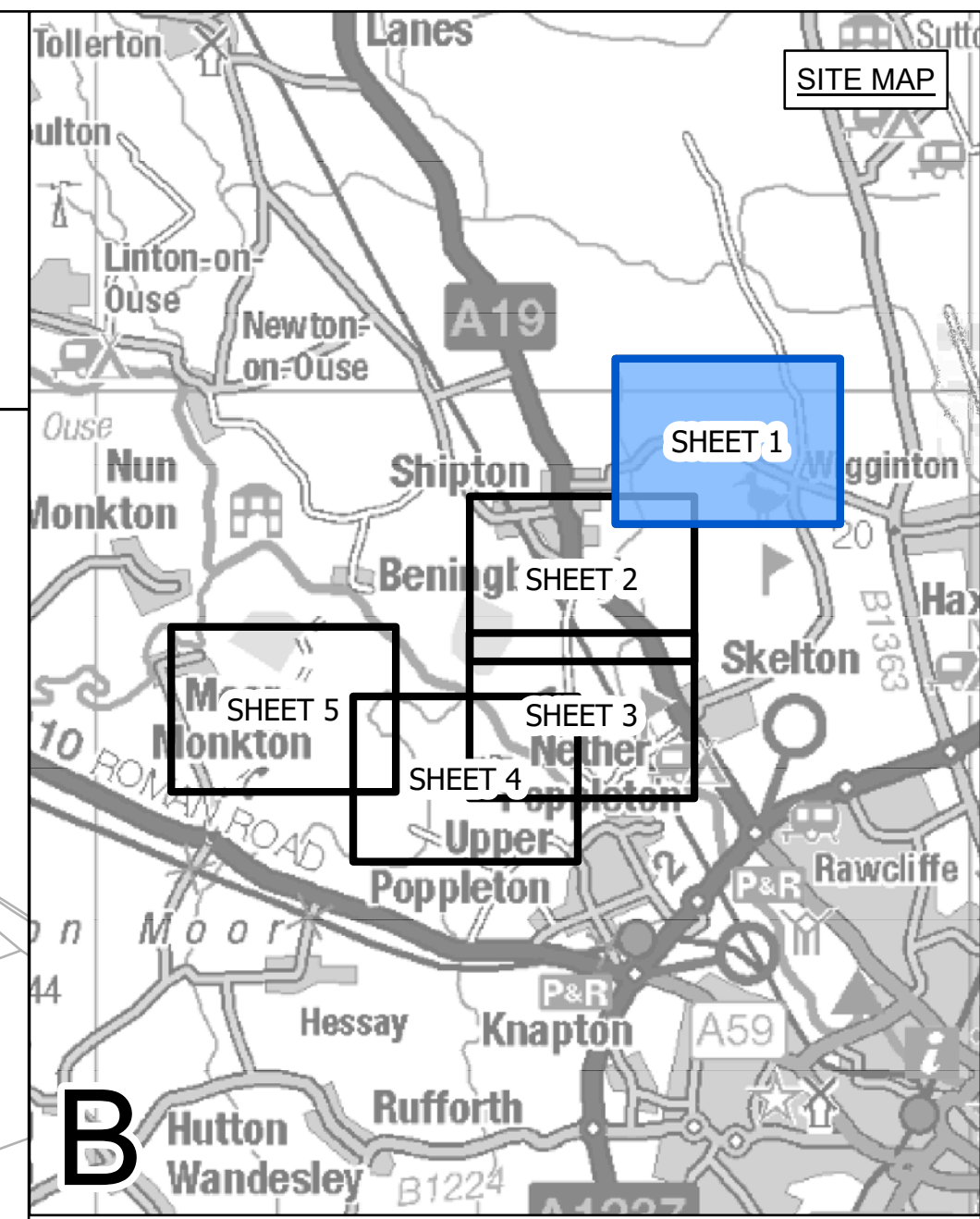
| Scale    | Sheet Size | Sheet        | Issue |
|----------|------------|--------------|-------|
| 1:10,000 | A0         | SHEET 1 OF 1 | A     |







NATIONAL GRID (YORKSHIRE GREEN ENERGY ENABLEMENT PROJECT) ORDER  
 STATUTORY OR NON-STATUTORY SITES OR FEATURES OF NATURE CONSERVATION PLAN  
 REGULATION 5(2)(1)(i)  
 SECTION B, SHEET 1 OF 5



- LEGEND**
- LOCAL AUTHORITY BOUNDARY
  - - - - SECTION BOUNDARY
  - ▭ ORDER LIMITS
  - ▨ SITE OF INTEREST FOR NATURE CONSERVATION (SINC)
  - ▨ CANDIDATE SITE OF INTEREST FOR NATURE CONSERVATION (SINC)
  - ▨ YORKSHIRE WILDLIFE TRUST (WWT) RESERVE
  - ▨ ANCIENT WOODLAND
  - + VETERAN TREE

**Notes**

This drawing is scaled at paper size A0, therefore any prints taken at smaller sizes will affect accuracy of the measurement units and should not be scaled against.

For additional detail on the plan suites, please refer to Document 2.3 Plan Guidance Document, located in Volume 2 of the DCO Application.

The local authorities' boundaries and titles are correct at the time of submission. North Yorkshire County Council and its 7 districts are expected to form a new single council (North Yorkshire Council) on 1 April 2023.

The statutory site boundary information was obtained from the Multi-Agency Geographic Information for the Countryside (MAGIC) website. Non-statutory site data has been supplied by West Yorkshire Ecology Services and North and East Yorkshire Ecological Data Centre.

There are no sites of geological importance within the Order Limits on this plan.

Coordinate System: British National Grid  
 Sheet X Centroid Coordinate: 456581 Sheet Y Centroid Coordinate: 459424

BACKGROUND MAPPING INFORMATION HAS BEEN REPRODUCED FROM THE ORDNANCE SURVEY BY PERMISSION OF ORDNANCE SURVEY OF THE CONTROLLER OF HER MAJESTY'S STATIONERY OFFICE. CROWN COPYRIGHT ORDNANCE SURVEY © BLUESKY INTERNATIONAL LTD © NATIONAL GRID ELECTRICITY - 100024241.

| Issue | Date       | Remarks            | Drawn | Checked | Approved |
|-------|------------|--------------------|-------|---------|----------|
| A     | 01/11/2022 | FOR DCO SUBMISSION | MTH   | SF      | EMD      |

Title

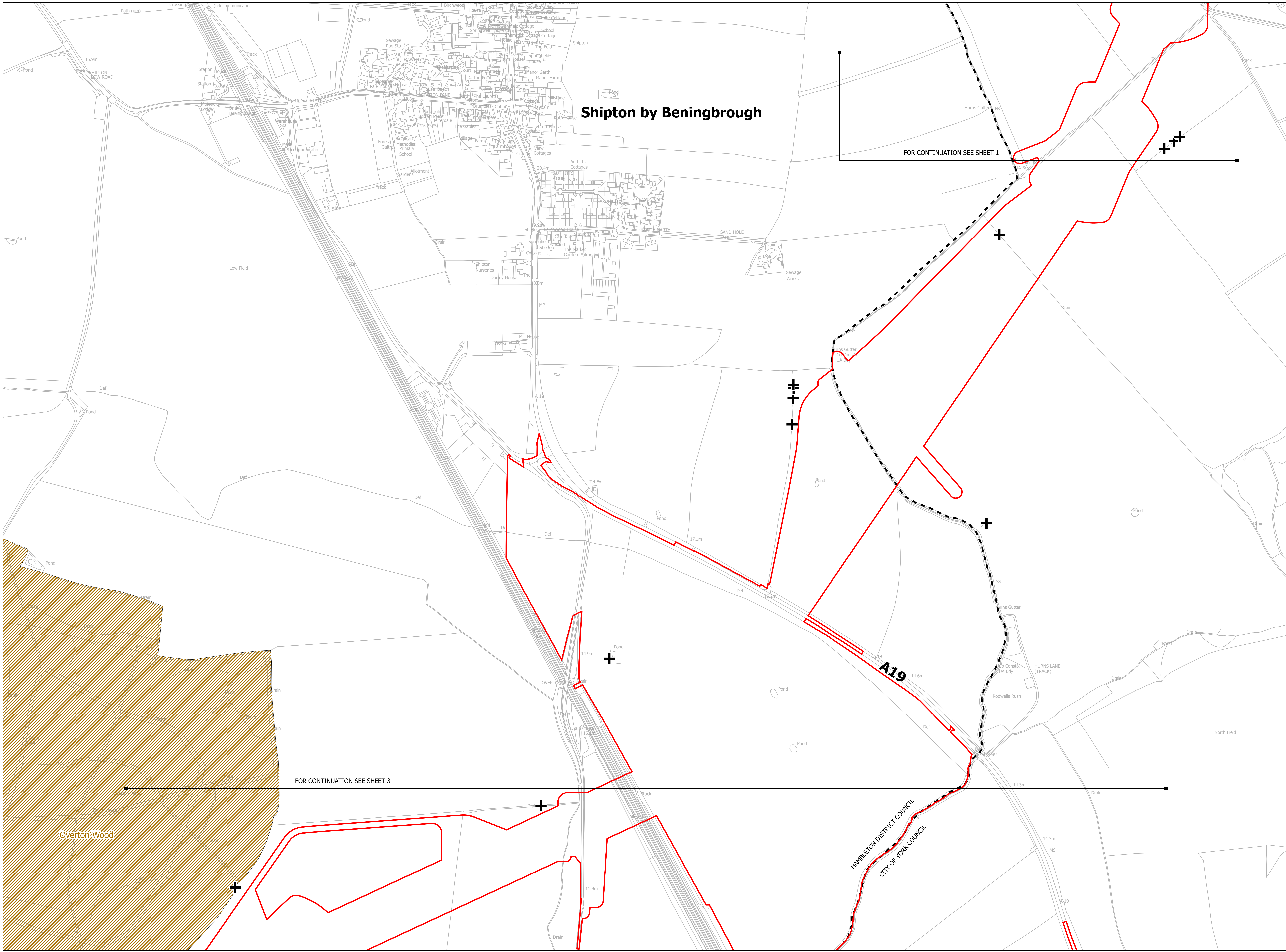
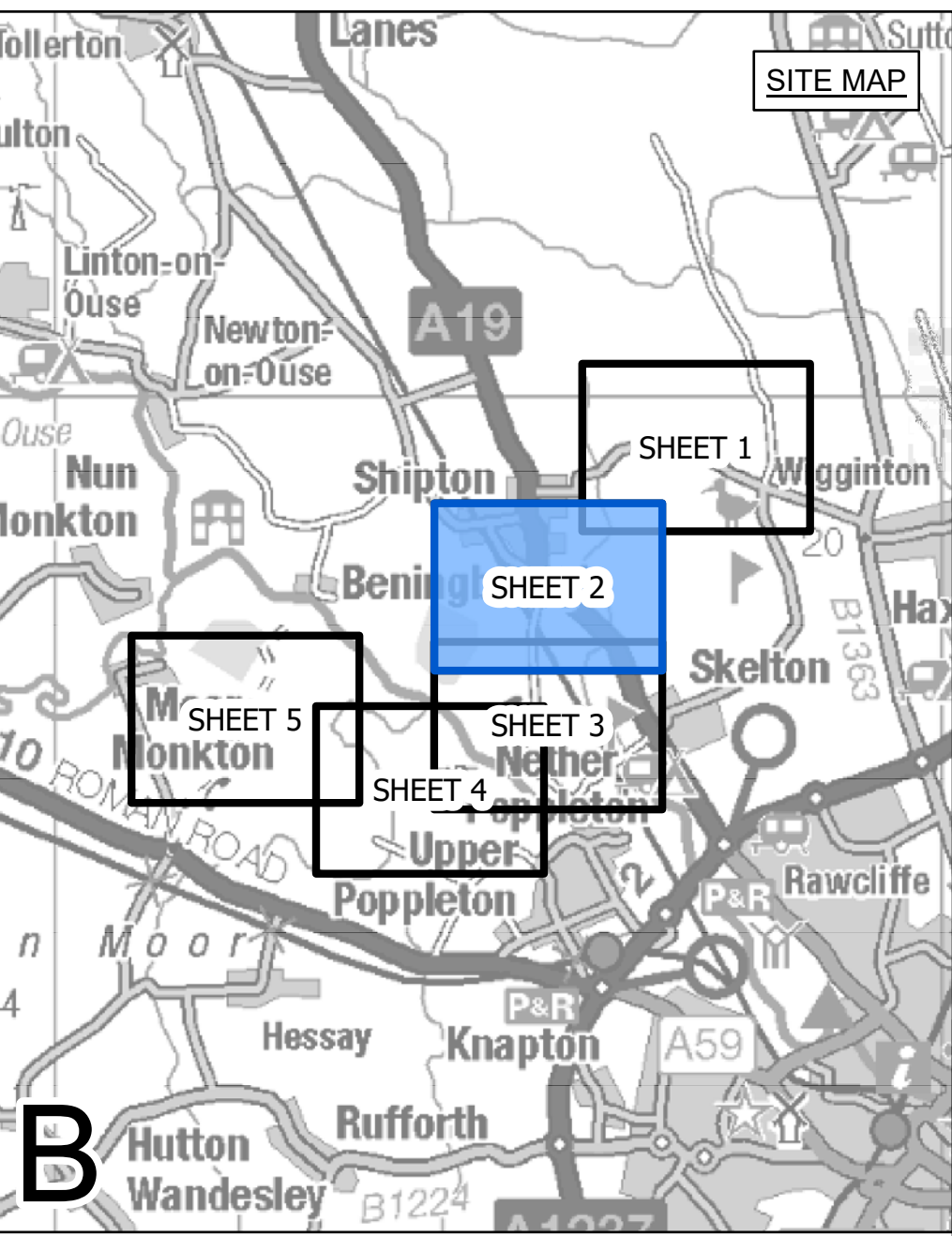
NATIONAL GRID  
 (YORKSHIRE GREEN ENERGY  
 ENABLEMENT PROJECT) ORDER  
 STATUTORY OR NON-STATUTORY SITES OR  
 FEATURES OF NATURE CONSERVATION PLAN  
 REGULATION 5(2)(1)(i)  
 SECTION B, SHEET 1 OF 5

|                                 |            |                |       |
|---------------------------------|------------|----------------|-------|
| Application Number              |            | EN020024       |       |
| National Grid Drawing Reference |            | DCO_B/NR/PS/01 |       |
| Scale                           | Sheet Size | Sheet          | Issue |
| 1:2,500                         | A0         | SHEET 1 OF 5   | A     |





NATIONAL GRID (YORKSHIRE GREEN ENERGY ENABLEMENT PROJECT) ORDER  
 STATUTORY OR NON-STATUTORY SITES OR FEATURES OF NATURE CONSERVATION PLAN  
 REGULATION 5(2)(1)(i)  
 SECTION B, SHEET 2 OF 5



- LEGEND**
- LOCAL AUTHORITY BOUNDARY
  - - - SECTION BOUNDARY
  - ▭ ORDER LIMITS
  - ▨ SITE OF INTEREST FOR NATURE CONSERVATION (SINC)
  - ▨ CANDIDATE SITE OF INTEREST FOR NATURE CONSERVATION (SINC)
  - ▨ YORKSHIRE WILDLIFE TRUST (WWT) RESERVE
  - ▨ ANCIENT WOODLAND
  - + VETERAN TREE

**Notes**

This drawing is scaled at paper size A0, therefore any prints taken at smaller sizes will affect accuracy of the measurement units and should not be scaled against.

For additional detail on the plan suites, please refer to Document 2.3 Plan Guidance Document, located in Volume 2 of the DCO Application.

The local authorities' boundaries and titles are correct at the time of submission. North Yorkshire County Council and its 7 districts are expected to form a new single council (North Yorkshire Council) on 1 April 2023.

The statutory site boundary information was obtained from the Multi-Agency Geographic Information for the Countryside (MAGIC) website. Non-statutory site data has been supplied by West Yorkshire Ecology Services and North and East Yorkshire Ecological Data Centre.

There are no sites of geological importance within the Order Limits on this plan.

Coordinate System: British National Grid  
 Sheet X Centroid Coordinate: 455555 Sheet Y Centroid Coordinate: 457851

BACKGROUND MAPPING INFORMATION HAS BEEN REPRODUCED FROM THE ORDNANCE SURVEY BY PERMISSION OF ORDNANCE SURVEY OF THE CONTROLLER OF HER MAJESTY'S STATIONERY OFFICE. CROWN COPYRIGHT ORDNANCE SURVEY ©. BLUESKY INTERNATIONAL LTD ©. NATIONAL GRID ELECTRICITY - 100024241.

| Issue | Date       | Remarks            | Drawn | Checked | Approved |
|-------|------------|--------------------|-------|---------|----------|
| A     | 01/11/2022 | FOR DCO SUBMISSION | MTH   | SF      | EMD      |

Title

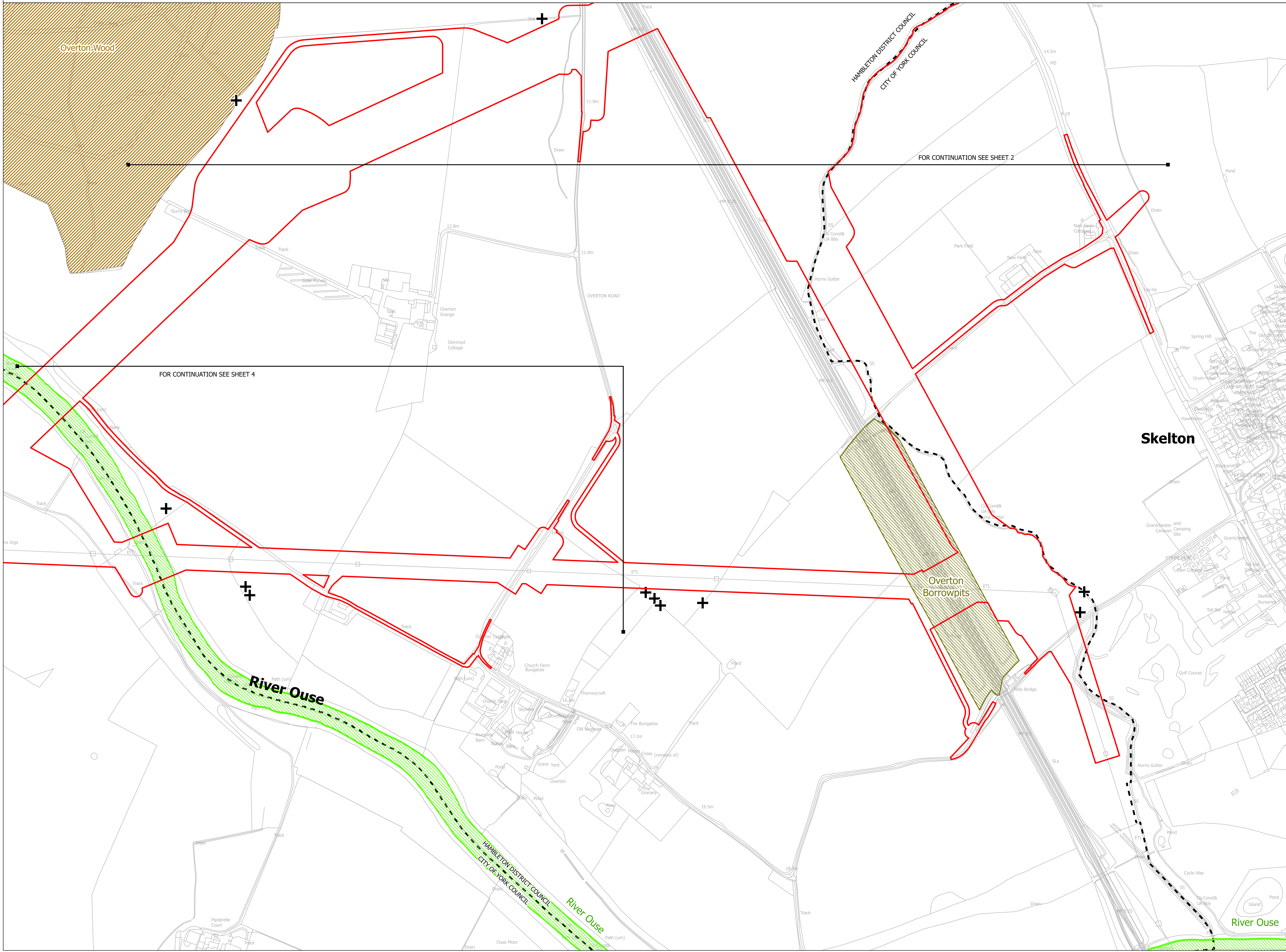
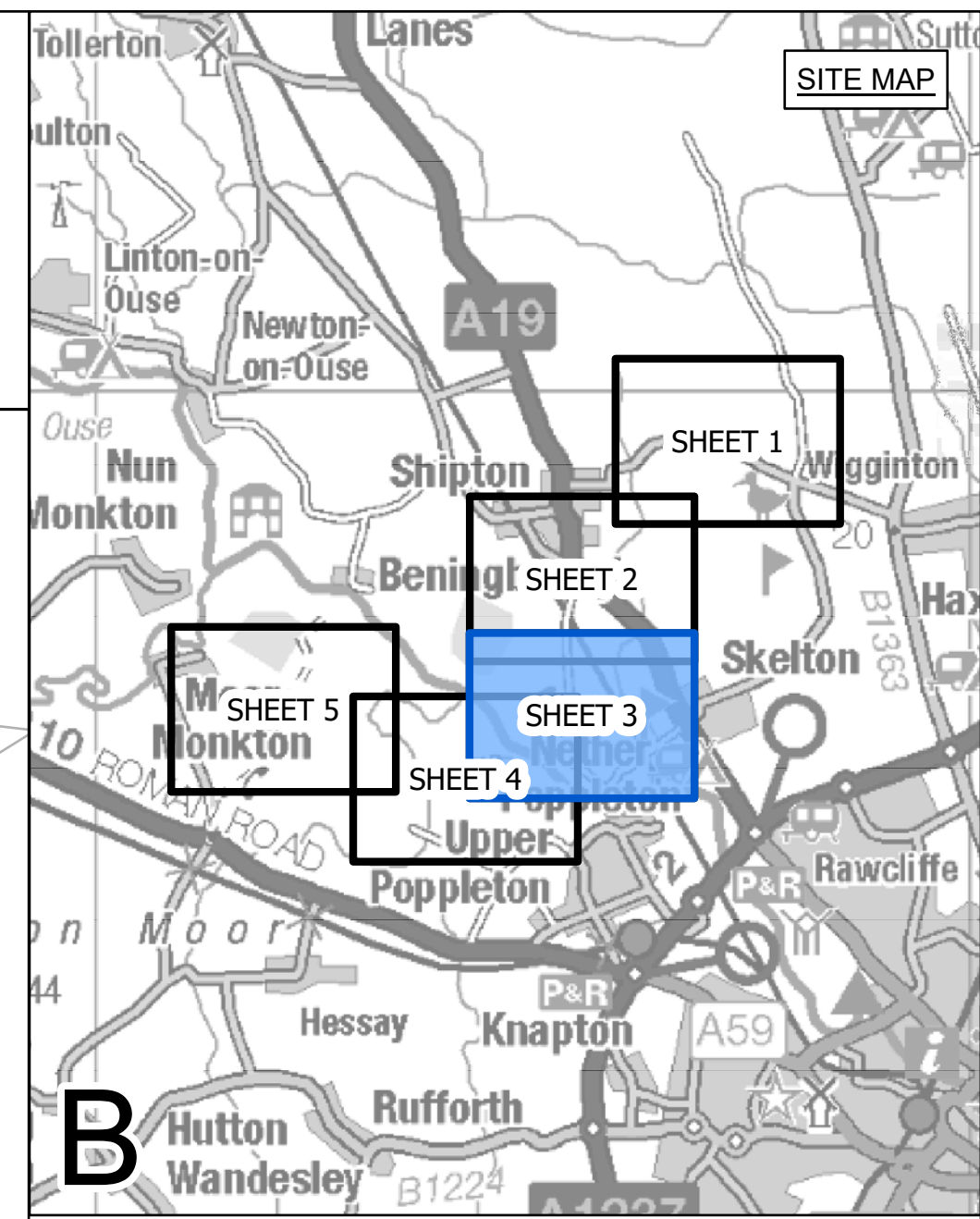
NATIONAL GRID  
 (YORKSHIRE GREEN ENERGY  
 ENABLEMENT PROJECT) ORDER  
 STATUTORY OR NON-STATUTORY SITES OR  
 FEATURES OF NATURE CONSERVATION PLAN  
 REGULATION 5(2)(1)(i)  
 SECTION B, SHEET 2 OF 5

|                                 |            |                |       |
|---------------------------------|------------|----------------|-------|
| Application Number              |            | EN020024       |       |
| National Grid Drawing Reference |            | DCO_B/NR/PS/02 |       |
| Scale                           | Sheet Size | Sheet          | Issue |
| 1:2,500                         | A0         | SHEET 2 OF 5   | A     |





NATIONAL GRID (YORKSHIRE GREEN ENERGY ENABLEMENT PROJECT) ORDER  
 STATUTORY OR NON-STATUTORY SITES OR FEATURES OF NATURE CONSERVATION PLAN  
 REGULATION 5(2)(1)(i)  
 SECTION B, SHEET 3 OF 5



- LEGEND**
- LOCAL AUTHORITY BOUNDARY
  - SECTION BOUNDARY
  - ORDER LIMITS
  - SITE OF INTEREST FOR NATURE CONSERVATION (SINC)
  - CANDIDATE SITE OF INTEREST FOR NATURE CONSERVATION (SINC)
  - YORKSHIRE WILDLIFE TRUST (WWT) RESERVE
  - ANCIENT WOODLAND
  - + VETERAN TREE

**Notes**

This drawing is scaled at paper size A0, therefore any prints taken at smaller sizes will affect accuracy of the measurement units and should not be scaled against.

For additional detail on the plan suites, please refer to Document 2.3 Plan Guidance Document, located in Volume 2 of the DCO Application.

The local authorities' boundaries and titles are correct at the time of submission. North Yorkshire County Council and its 7 districts are expected to form a new single council (North Yorkshire Council) on 1 April 2023.

The statutory site boundary information was obtained from the Multi-Agency Geographic Information for the Countryside (MAGIC) website. Non-statutory site data has been supplied by West Yorkshire Ecology Services and North and East Yorkshire Ecological Data Centre.

There are no sites of geological importance within the Order Limits on this plan.

Coordinate System: British National Grid  
 Sheet X Centroid Coordinate: 455553 Sheet Y Centroid Coordinate: 456286

BACKGROUND MAPPING INFORMATION HAS BEEN REPRODUCED FROM THE ORDNANCE SURVEY BY PERMISSION OF ORDNANCE SURVEY OF THE CONTROLLER OF HER MAJESTY'S STATIONERY OFFICE. CROWN COPYRIGHT ORDNANCE SURVEY ©. BLUESKY INTERNATIONAL LTD ©. NATIONAL GRID ELECTRICITY - 100024241.

| Issue | Date       | Remarks            | Drawn | Checked | Approved |
|-------|------------|--------------------|-------|---------|----------|
| A     | 01/11/2022 | FOR DCO SUBMISSION | MTH   | SF      | EMD      |

**Title**

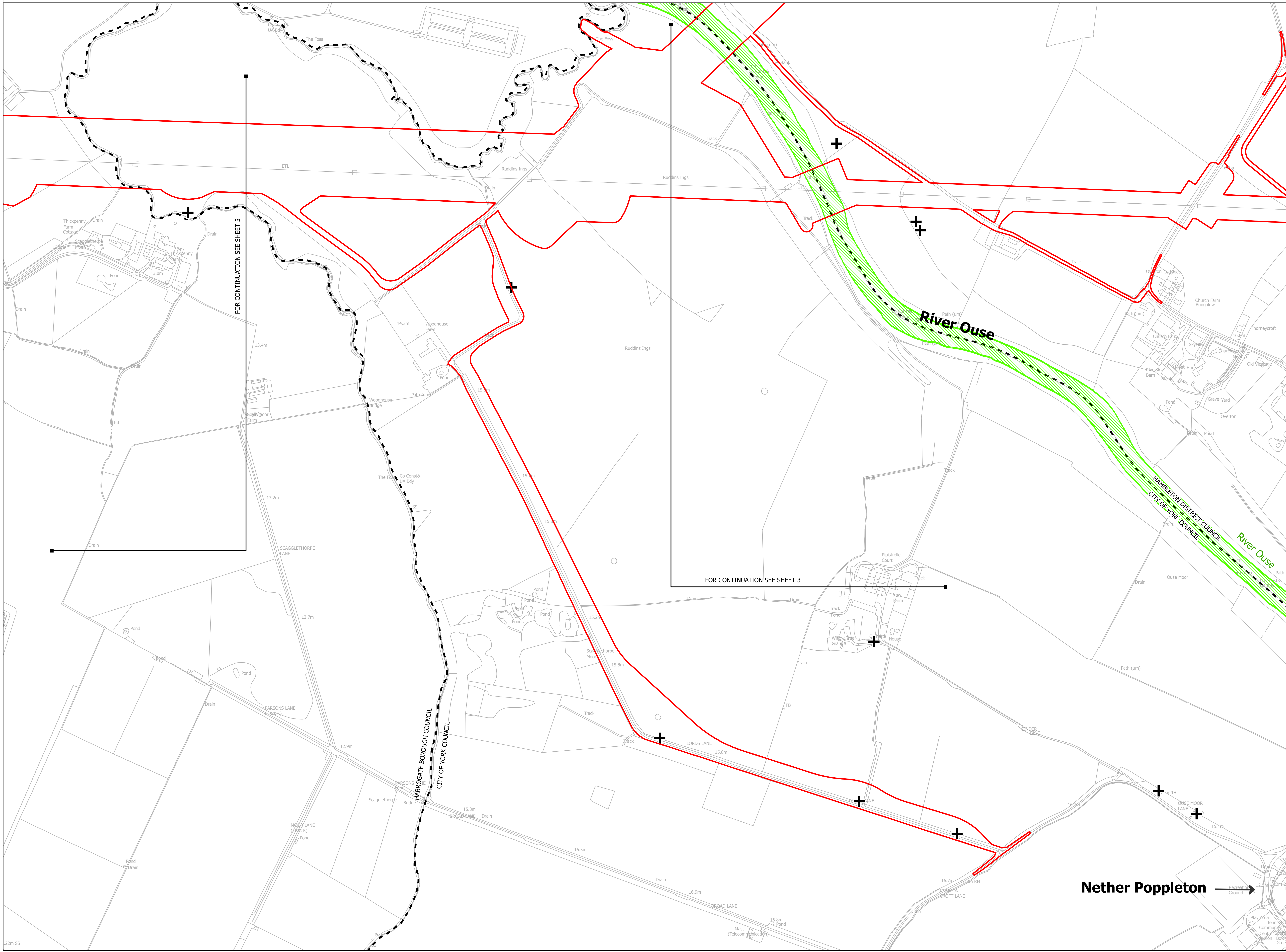
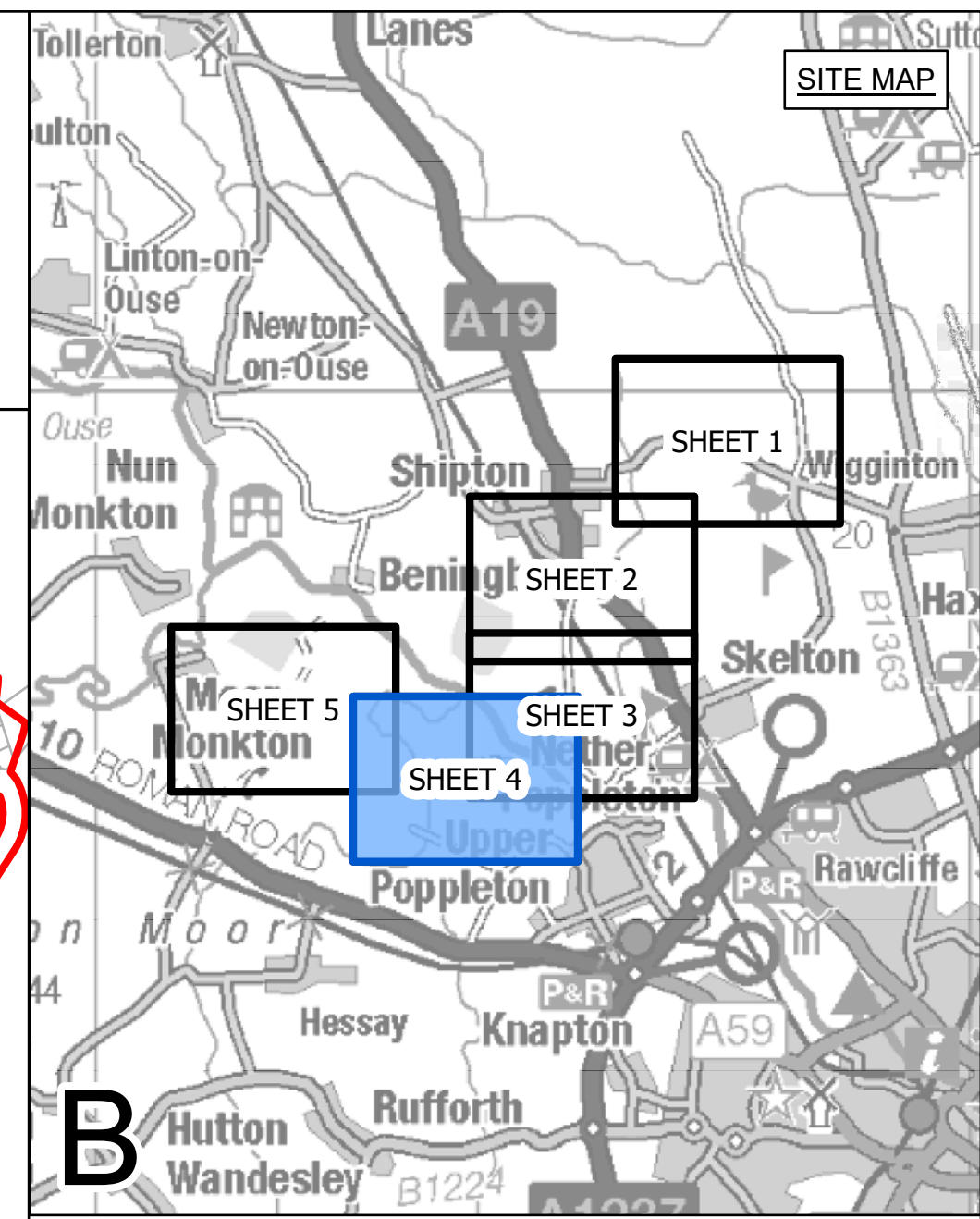
NATIONAL GRID  
 (YORKSHIRE GREEN ENERGY  
 ENABLEMENT PROJECT) ORDER  
 STATUTORY OR NON-STATUTORY SITES OR  
 FEATURES OF NATURE CONSERVATION PLAN  
 REGULATION 5(2)(1)(i)  
 SECTION B, SHEET 3 OF 5

|                                 |                |              |       |
|---------------------------------|----------------|--------------|-------|
|                                 |                |              |       |
| Application Number              | EN020024       |              |       |
| National Grid Drawing Reference | DCO_B/NR/PS/03 |              |       |
| Scale                           | Sheet Size     | Sheet        | Issue |
| 1:2,500                         | A0             | SHEET 3 OF 5 | A     |





NATIONAL GRID (YORKSHIRE GREEN ENERGY ENABLEMENT PROJECT) ORDER  
 STATUTORY OR NON-STATUTORY SITES OR FEATURES OF NATURE CONSERVATION PLAN  
 REGULATION 5(2)(1)(i)  
 SECTION B, SHEET 4 OF 5



- LEGEND**
- LOCAL AUTHORITY BOUNDARY
  - SECTION BOUNDARY
  - ORDER LIMITS
  - SITE OF INTEREST FOR NATURE CONSERVATION (SINC)
  - CANDIDATE SITE OF INTEREST FOR NATURE CONSERVATION (SINC)
  - YORKSHIRE WILDLIFE TRUST (WWT) RESERVE
  - ANCIENT WOODLAND
  - + VETERAN TREE

**Notes**

This drawing is scaled at paper size A0, therefore any prints taken at smaller sizes will affect accuracy of the measurement units and should not be scaled against.

For additional detail on the plan suites, please refer to Document 2.3 Plan Guidance Document, located in Volume 2 of the DCO Application.

The local authorities' boundaries and titles are correct at the time of submission. North Yorkshire County Council and its 7 districts are expected to form a new single council (North Yorkshire Council) on 1 April 2023.

The statutory site boundary information was obtained from the Multi-Agency Geographic Information for the Countryside (MAGIC) website. Non-statutory site data has been supplied by West Yorkshire Ecology Services and North and East Yorkshire Ecological Data Centre.

There are no sites of geological importance within the Order Limits on this plan.

Coordinate System: British National Grid  
 Sheet X Centroid Coordinate: 454220 Sheet Y Centroid Coordinate: 455561

BACKGROUND MAPPING INFORMATION HAS BEEN REPRODUCED FROM THE ORDNANCE SURVEY BY PERMISSION OF ORDNANCE SURVEY OF THE CONTROLLER OF HER MAJESTY'S STATIONERY OFFICE. CROWN COPYRIGHT ORDNANCE SURVEY © BLUESKY INTERNATIONAL LTD © NATIONAL GRID ELECTRICITY - 100024241.

| Issue | Date       | Remarks            | Drawn | Checked | Approved |
|-------|------------|--------------------|-------|---------|----------|
| A     | 01/11/2022 | FOR DCO SUBMISSION | MTH   | SF      | EMD      |

**Title**

NATIONAL GRID  
 (YORKSHIRE GREEN ENERGY  
 ENABLEMENT PROJECT) ORDER  
 STATUTORY OR NON-STATUTORY SITES OR  
 FEATURES OF NATURE CONSERVATION PLAN  
 REGULATION 5(2)(1)(i)  
 SECTION B, SHEET 4 OF 5

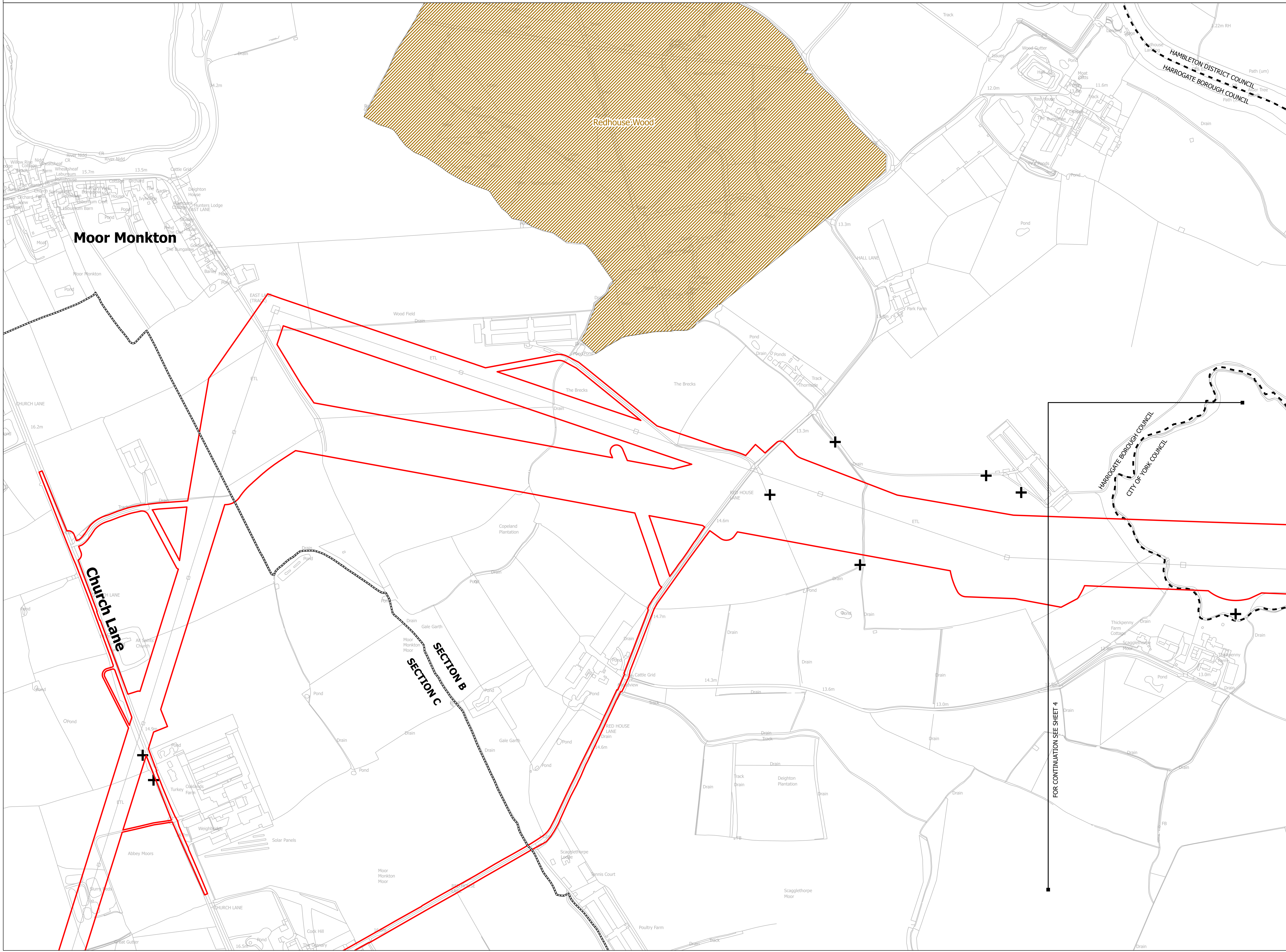
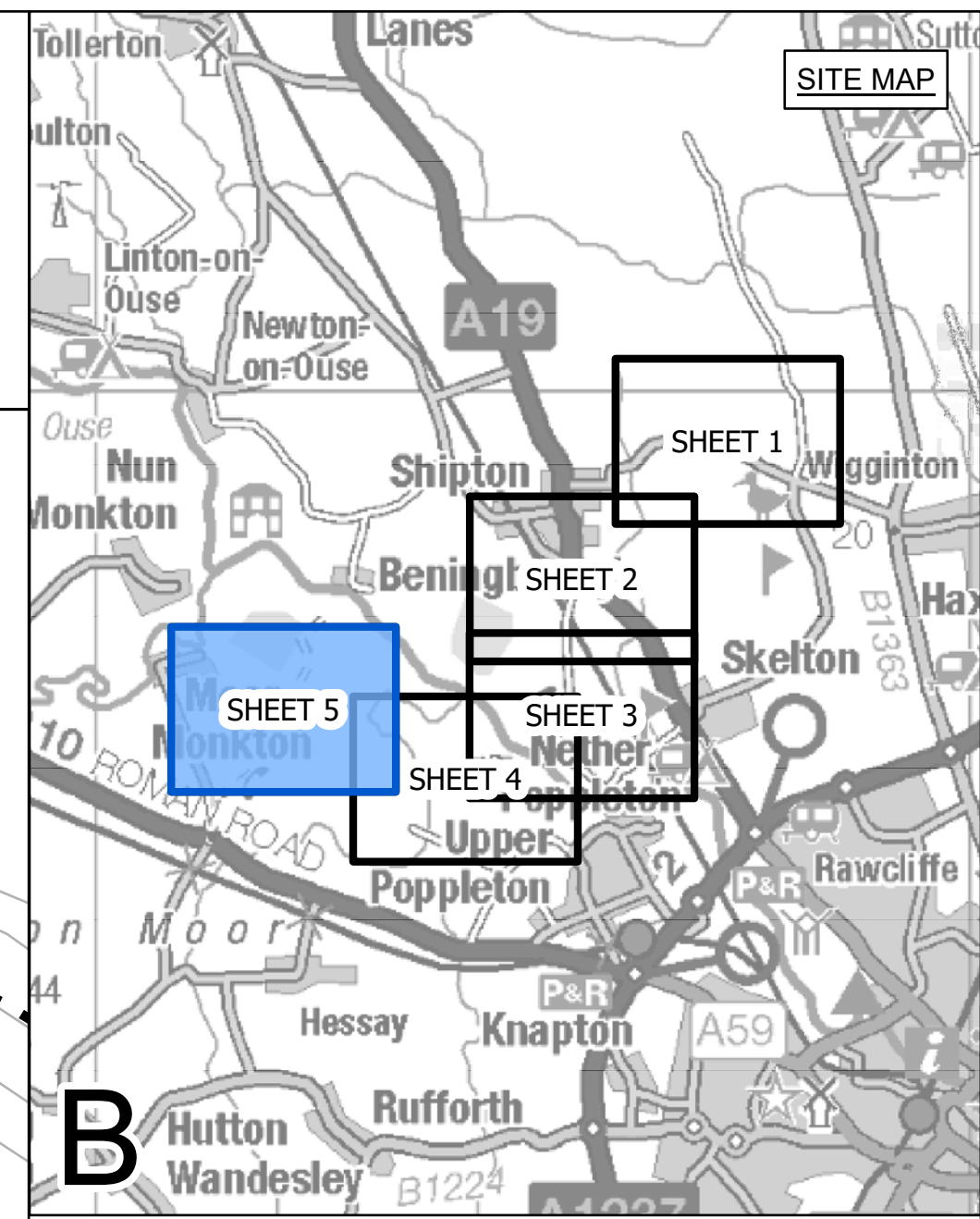
|                                 |            |                |       |  |
|---------------------------------|------------|----------------|-------|--|
| Application Number              |            | EN020024       |       |  |
| National Grid Drawing Reference |            | DCO_B/NR/PS/04 |       |  |
| Scale                           | Sheet Size | Sheet          | Issue |  |
| 1:2,500                         | A0         | SHEET 4 OF 5   | A     |  |

**Nether Poppleton** →





NATIONAL GRID (YORKSHIRE GREEN ENERGY ENABLEMENT PROJECT) ORDER  
 STATUTORY OR NON-STATUTORY SITES OR FEATURES OF NATURE CONSERVATION PLAN  
 REGULATION 5(2)(1)(i)  
 SECTION B, SHEET 5 OF 5



- LEGEND**
- LOCAL AUTHORITY BOUNDARY
  - - - SECTION BOUNDARY
  - ▭ ORDER LIMITS
  - ▨ SITE OF INTEREST FOR NATURE CONSERVATION (SINC)
  - ▨ CANDIDATE SITE OF INTEREST FOR NATURE CONSERVATION (SINC)
  - ▨ YORKSHIRE WILDLIFE TRUST (WWT) RESERVE
  - ▨ ANCIENT WOODLAND
  - ⊕ VETERAN TREE

**Notes**

This drawing is scaled at paper size A0, therefore any prints taken at smaller sizes will affect accuracy of the measurement units and should not be scaled against.

For additional detail on the plan suites, please refer to Document 2.3 Plan Guidance Document, located in Volume 2 of the DCO Application.

The local authorities' boundaries and titles are correct at the time of submission. North Yorkshire County Council and its 7 districts are expected to form a new single council (North Yorkshire Council) on 1 April 2023.

The statutory site boundary information was obtained from the Multi-Agency Geographic Information for the Countryside (MAGIC) website. Non-statutory site data has been supplied by West Yorkshire Ecology Services and North and East Yorkshire Ecological Data Centre.

There are no sites of geological importance within the Order Limits on this plan.

Coordinate System: British National Grid  
 Sheet X Centroid Coordinate: 452136 Sheet Y Centroid Coordinate: 456359

BACKGROUND MAPPING INFORMATION HAS BEEN REPRODUCED FROM THE ORDNANCE SURVEY BY PERMISSION OF ORDNANCE SURVEY OF THE CONTROLLER OF HER MAJESTY'S STATIONERY OFFICE. CROWN COPYRIGHT ORDNANCE SURVEY ©. BLUESKY INTERNATIONAL LTD ©. NATIONAL GRID ELECTRICITY - 100024241.

| Issue | Date       | Remarks            | Drawn | Checked | Approved |
|-------|------------|--------------------|-------|---------|----------|
| A     | 01/11/2022 | FOR DCO SUBMISSION | MTH   | SF      | EMD      |

**Title**

NATIONAL GRID  
 (YORKSHIRE GREEN ENERGY  
 ENABLEMENT PROJECT) ORDER  
 STATUTORY OR NON-STATUTORY SITES OR  
 FEATURES OF NATURE CONSERVATION PLAN  
 REGULATION 5(2)(1)(i)  
 SECTION B, SHEET 5 OF 5

**nationalgrid**

|                                 |                |              |       |
|---------------------------------|----------------|--------------|-------|
| Application Number              | EN020024       |              |       |
| National Grid Drawing Reference | DCO_B/NR/PS/05 |              |       |
| Scale                           | Sheet Size     | Sheet        | Issue |
| 1:2,500                         | A0             | SHEET 5 OF 5 | A     |



**National Grid plc  
National Grid House,  
Warwick Technology Park,  
Gallows Hill, Warwick.  
CV34 6DA United Kingdom**

**Registered in England and  
Wales  
No. 4031152**

